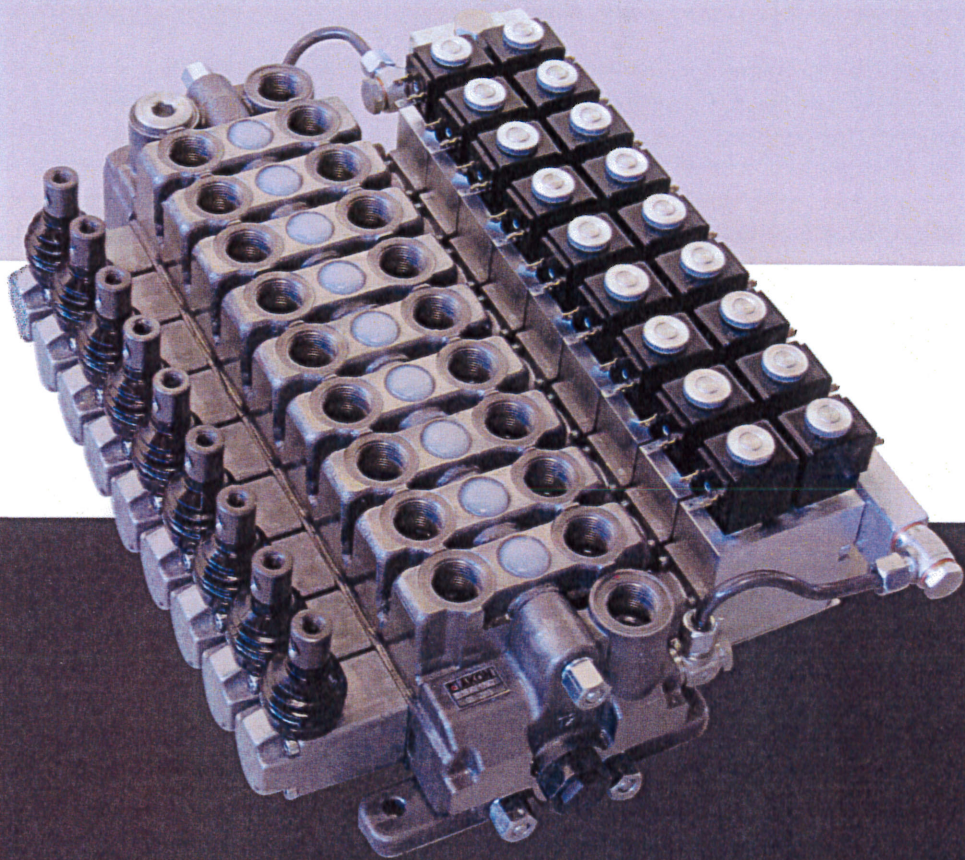


DIRECTIONAL CONTROL VALVE
KV17 SERIES



TECHNICAL DATA

Maximum Pressure Settings

Maximum Working Pressure	: 350 Bar
Tank Line Pressure	: 25 Bar
Main Relief Valve Pressure Settings	: Up to 350 Bar
Standart Pressure Setting	: 190 bar@15l/min
Port Relief Valve Pressure Settings	: Up to 350 Bar

Flow rates

Nominal Flow Rate	: 80 l/min
Maximum Flow Rate	: 90 l/min

Spool Leakage

Maximum 10 cm³/min@100 bar with 32cSt oil

Filtration

18/14 according to ISO 4406

Viscosity

Hydraulic fluid viscosity range at continuous operation: 10-400 mm²/s(cSt)

Temperature Range

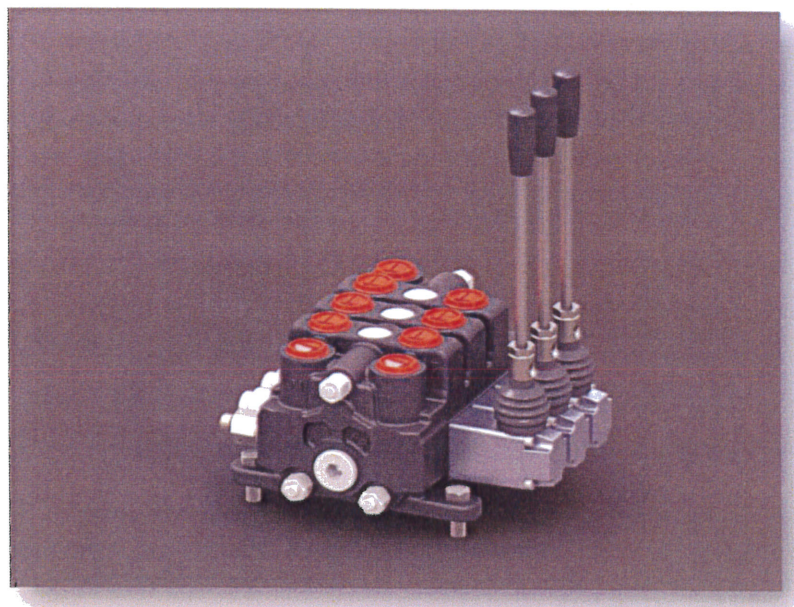
Hydraulic temperature range for continuous operation -15°C-+80°C

Spool Stroke

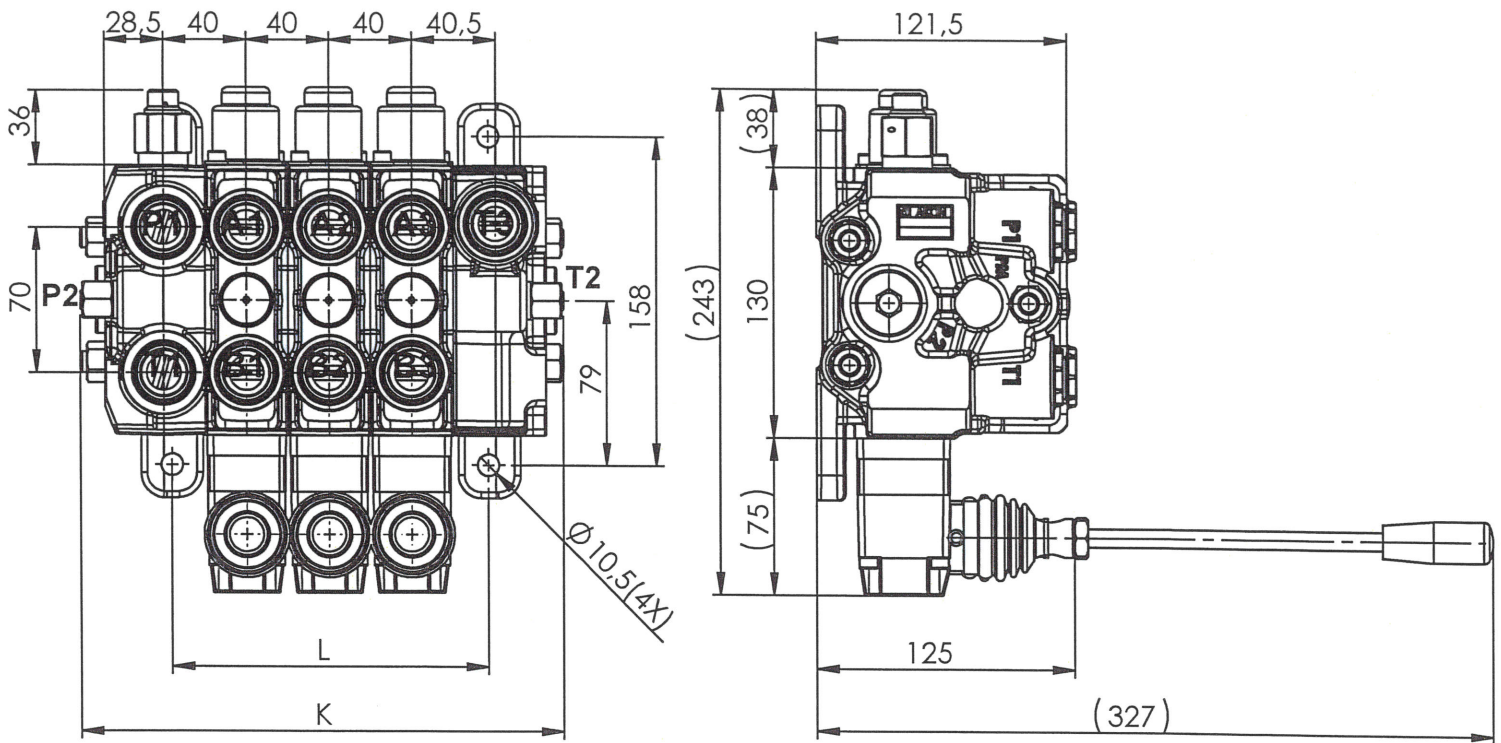
-7,5/+7,5 mm

Ambient Temperature

With mechanical, pneumatic and hydraulic devices from -40° to 60°C with electric devices from -20° to 60°C



DIMENSIONAL DATA



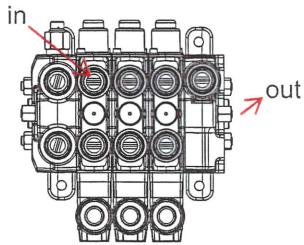
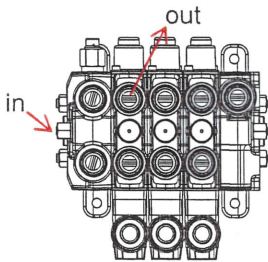
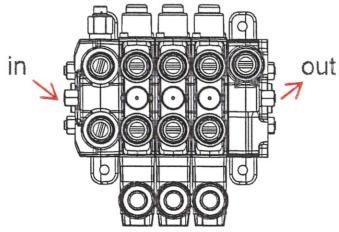
TYPE	L (mm)	K (mm)
KV17/1	73	155
KV17/2	113	195
KV17/3	153	235
KV17/4	193	275
KV17/5	233	315
KV17/6	273	355
KV17/7	313	395
KV17/8	353	435

THREAD CODING

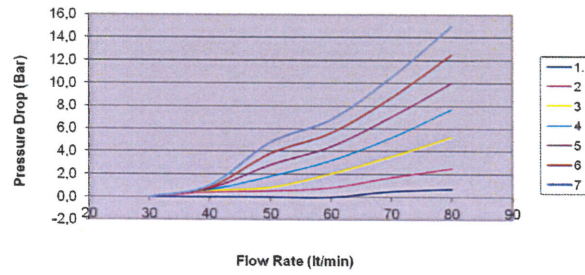
Thread	Code	P1-P2-T1	A/B	T2-T3
BSP	B	G1/2"	G1/2"	G3/4"

PERFORMANCE DATA

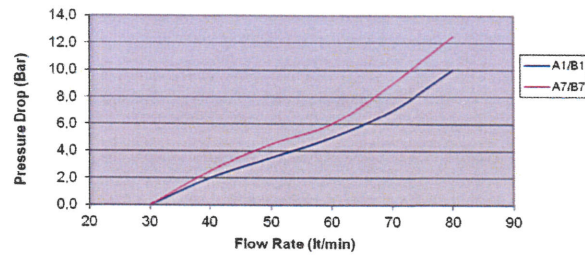
Pressure Drop



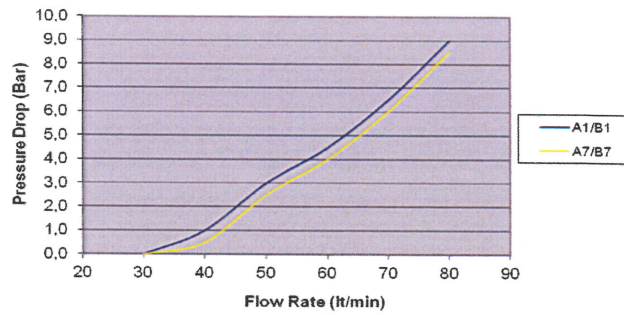
P₂ - T₂



P₂ - A/B



A/B - T₃



Note: Measured with standart spool and 32 cSt hydraulic oil@40°C