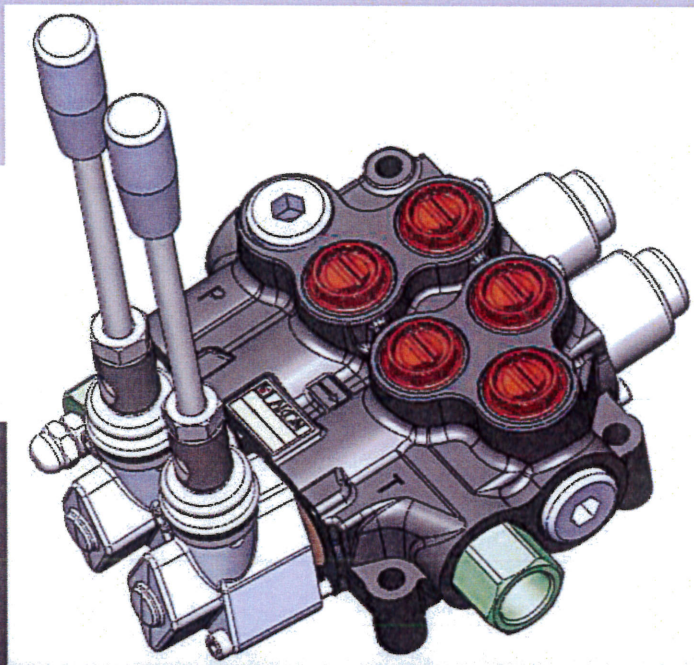


Monoblock Directional Control Valves
AMV50



TECHNICAL DATA

Maximum Pressure Settings

Maximum Working Pressure	: 350 Bar
Maximum Back Pressure	: 30 Bar
Main Relief Valve Pressure Settings	: Up to 350 Bar
Standart Pressure Setting	: 185 bar@16l/min

Flow rates

AMV50 designed to work as a perfect control device for flow rates 10-50 lpm nominal flow rates.
Maximum Flow Rate : 60 l/min

Spool Leakage

4cc - 10cc at 100 Bar 32cSt 40°C

Filtration

18/14 according to ISO 4406

Viscosity

Hydraulic fluid viscosity range at continuous operation: 10-400 mm²/s(cSt)

Temperature Range

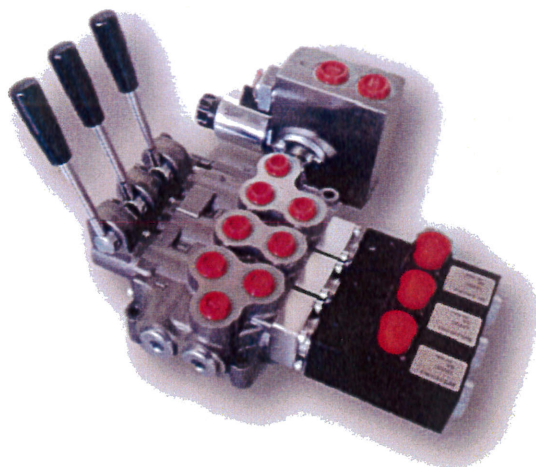
Hydraulic temperature range for continuous operation -15°C+80°C

Spool Stroke

-5,5/+5,5 mm

Ambient Temperature

With mechanical, pneumatic and hydraulic devices from -40° to 60°C with electric devices from -20° to 60°C



KEY FEATURES

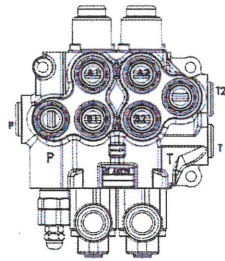
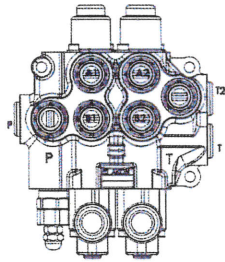
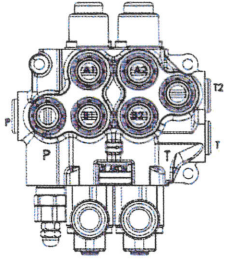
- AMV50 is a new generation monoblock valve series designed for system pressures up to 350 bar and pump flows up to 60 l/min,
- AMV50 designed for maximal flexibility that is especially in combination with the wide range of available standard parts.
- 16mm Spool diameter enables minimum friction and smoother control.
- New generation spool design enables better results in internal leakages.
- Simple and compactly designed monoblock valve series available from 1 to 7 sections
- Interchangeable Ø16 spools.

AMV50 is designed as a flexible valve for a wide range of applications, But typical applications are agricultural applications, tractors, garbage trucks and platforms within the flow range for the valve. The valve offers perfect control for aerial platforms and offers excellent operating characteristics with its inlet proportional extension.

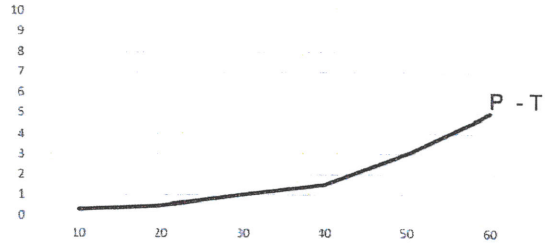


PERFORMANCE DATA

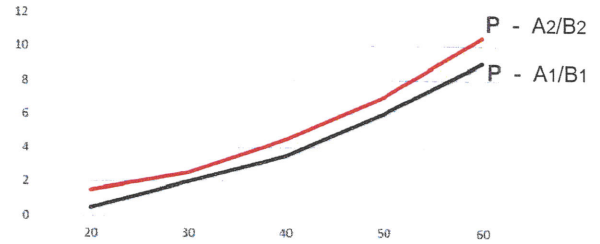
Pressure Drop



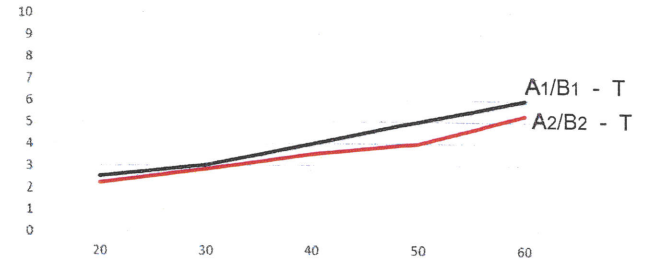
P - T



P - A/B



A/B - T



AMV50 SPOOL FORCE

Neutral	Stroke	Stroke End Force
Kg	mm	Kg
13	5,5	16

Note: Measured for AMV502, 2 spool valve, further performance data can be given upon request

Note: Measured with standart spool and 32 cSt hydraulic oil@40°C